

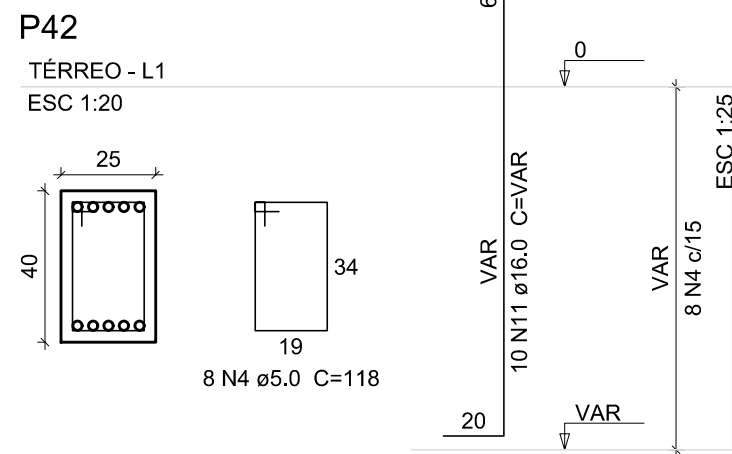
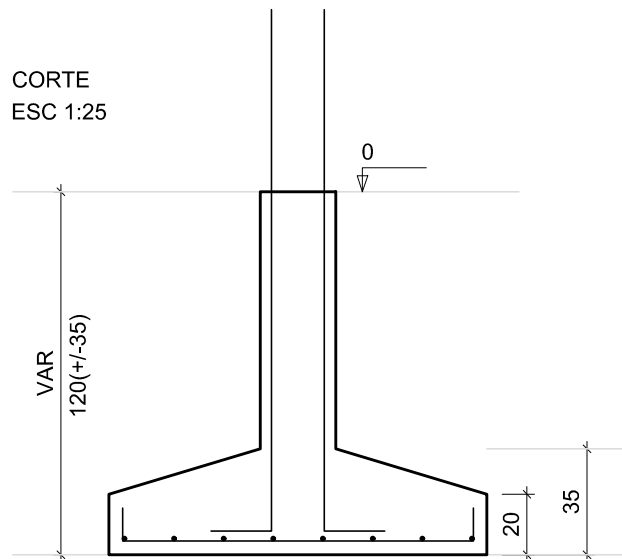
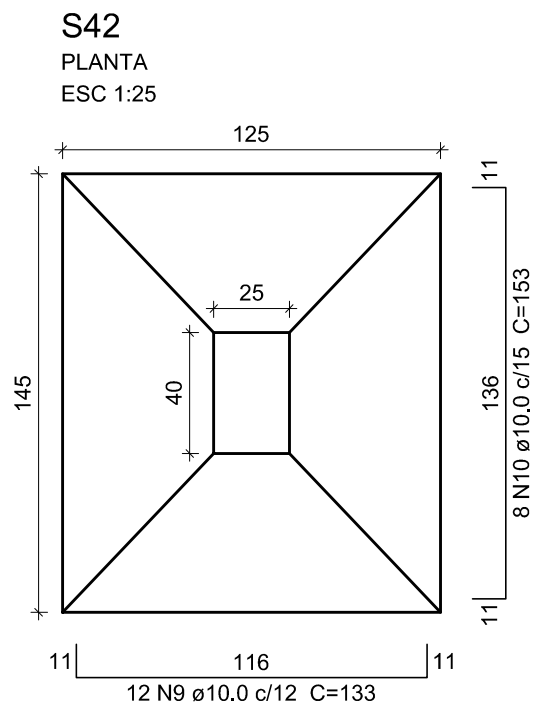
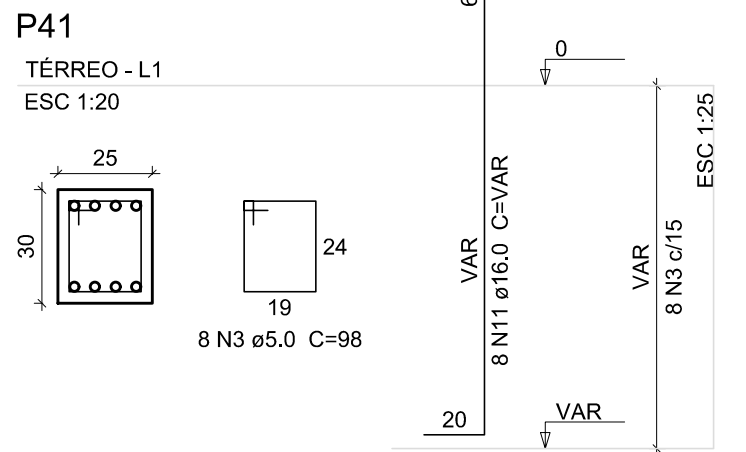
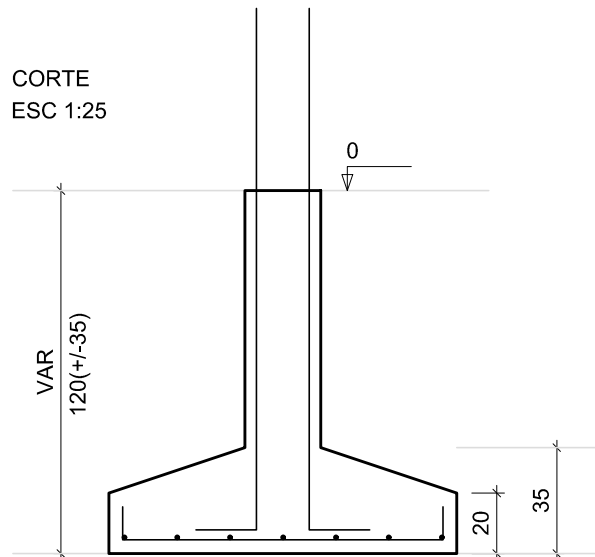
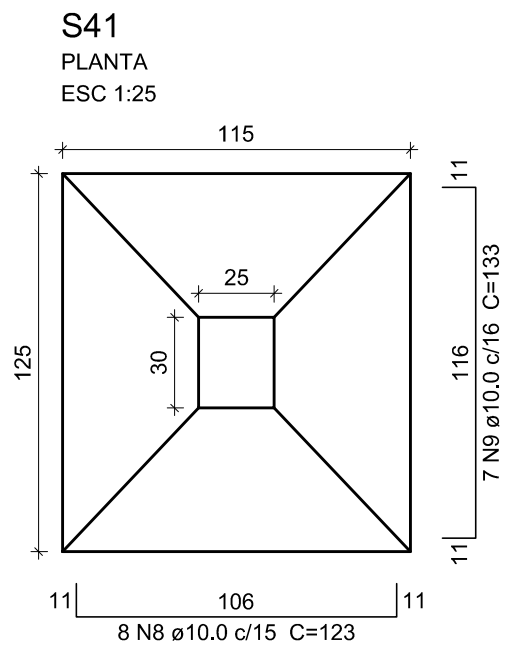
Relação do aço

AÇO	N	DIAM (mm)	QUANT	C.UNIT (cm)	C.TOTAL (cm)
CA60	1	5.0	10	108	1080
	2	5.0	10	29	290
	3	5.0	8	98	784
	4	5.0	8	118	944
CA50	5	8.0	11	109	1199
	6	8.0	7	129	903
	7	10.0	8	VAR	VAR
	8	10.0	8	123	984
	9	10.0	19	133	2527
	10	10.0	8	153	1224
	11	16.0	18	VAR	VAR

Resumo do aço

AÇO	DIAM (mm)	C.TOTAL (m)	PESO (kg)
CA50	8.0	21.1	8.3
	10.0	61.2	37.7
	16.0	34.6	54.5
CA60	5.0	31	4.8
PESO TOTAL (kg)			
CA50	100.5		
CA60	4.8		

Volume de concreto (C-25) = 1.46 m³
Área de forma = 7.24 m²



Prefeitura Municipal de

Rolante

obra:
Pavilhão das Cuqueiras

local:
Rua Júlio Kohlrausch, 524 - Rolante/RS


prancha:
Estrutural - Produção e vendas - Detalhamento das fundações (3/3)

extensão/área:
665,10m²

escala:
indicada

unidade:
centímetro

data:
FEV./2016



Ademir Gomes Gonçalves
prefeito municipal

Luciana Gabriele Renck
eng. civil - CREA RS 193.127

Av. Getúlio Vargas, 110 | Centro | Rolante/RS | CEP 95690-000
(51) 3547.1188 | www.prefrolante.com.br